

Highly Effective and Efficient Solution for Pre-Mixing and Dispersion

The Diamix is a highly efficient enclosed mixing system that will disperse, dissolve, and homogenize both high and low viscosities in addition to thixotropic liquids. The enclosed tank system consists of a Diaf Dissolver with a high shear dispersion mix head, an anchor type agitator with spring-loaded scrapers, and an optional screw conveyor.

The Diamix is backed with 100+ years of experience designing proven mixing technologies for manufacturers of paints, varnishes, coatings, and other chemical-based products. It is constructed of the highest quality materials and offers a robust, sturdy design to provide many decades of superior performance.



Featured Benefits

- Excellent dispersion at low energy consumption
- Integrated design reduces the production time
- Enclosed construction with connections and manhole in the top
- Easy emptying of tank with centrally placed outlet at the bottom
- Hydraulic pump system for lifting/lowering
- Includes operator controls (Operator stand is optional)
- Auto-overload control
- Produce high viscosity and heat-sensitive products without problems
- Vapor and dust reduced to a minimum
- Top mounted anchor mixer without bottom fixation
- Scrapers made of Teflon
- Easy to install, operate, and maintain

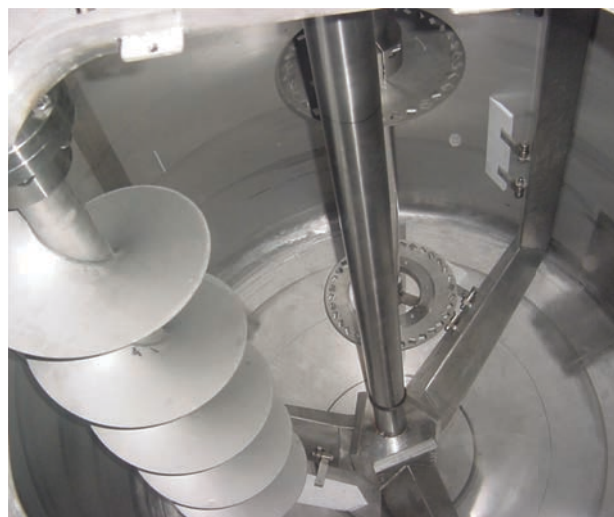


Applications:

- Paints
- Coatings
- Varnishes
- Primers
- Road traffic paints
- Pastes and glues
- Emulsions
- Fillers
- Printing inks
- Flexo inks

Options:

- PLC control and automation for loading recipes and cleaning procedures
- Vacuum and pressure capable units are available
- Motors and control panel in EX-proof as well as non-EX proof execution
- Cooling/heating jacket
- Stand for the control panel
- Screw conveyor
- Temperature monitoring
- Stainless steel/acid resistant delivery
- Flushing device for interior cleaning
- Custom sized container
- Batch control
- Load cells
- Remote online service
- On-site service



Example of 3-axle Diamix without lifting / lowering

Admix is located in the US and Denmark, manufacturing agitators and mixers for customers worldwide in various industries. Innovative engineering combined with 100+ years of experience, enables us to solve the most complex mixing problems for our customers.

Diamix Technical Details

Model	Motor / Control Board		Motor Power kW		Rotation Speed RPM		Frequency Converter	Net Weight
<i>No. indicates liter capacity</i>	<i>Standard</i>	<i>Explosion Proof</i>	<i>Dissolver</i>	<i>Anchor Agitator</i>	<i>Dissolver</i>	<i>Anchor Agitator</i>		<i>kg</i>
200 R	✓		10	1.1	4300	34		400 – 500
1500 R	✓		22	4	1500	16	✓	1500 – 2100
1500 RF	✓		22	4	500 – 1800	16		
1500 REx		✓	24	3.6	1500	16		
1500 RFEEx		✓	22	3.6	500 – 1800	16	✓	
3000 R	✓		45	7.5	1500	14		2800 – 3200
3000 RF	✓		45	7.5	500 – 1800	14	✓	
3000 REx		✓	44	6.8	1500	14		
3000 RFEEx		✓	45	6.8	500 – 1800	14	✓	
4500 R	✓		55	11	1500	11		3300 – 4000
4500 RF	✓		55	11	500 – 1500	11	✓	
4500 REx		✓	58	10	1500	11		
4500 RFEEx		✓	55	10	500 – 1500	11	✓	
6000 R	✓		90	15	1500	9		3800 – 4500
6000 RF	✓		90	15	500 – 1500	9	✓	
6000 REx		✓	84	15	1500	9		
6000 RFEEx		✓	90	15	500 – 1500	9	✓	
9000 R	✓		110	18.5	1500	9		4500 – 5500
9000 RF	✓		110	18.5	500 – 1500	9	✓	
9000 REx		✓	100	17.5	1500	9		
9000 RFEEx		✓	110	17.5	500 – 1500	9	✓	